

Feature

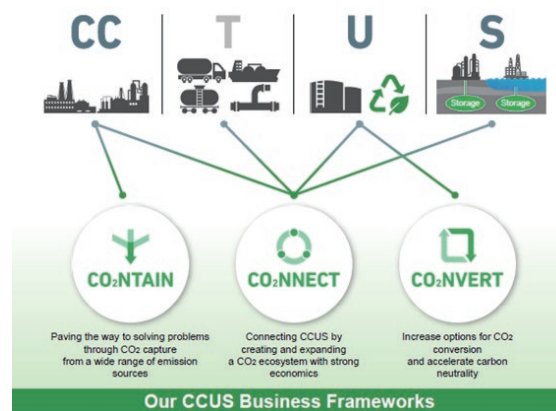
Expanding Activities to Conserve the Future Global Environment



Mitsubishi Heavy Industries

The “Breeze Concept”: Leaving a Gentle Breeze to the Children of the 22nd Century

Mitsubishi Heavy Industries (MHI) Group is working to promote a strategic energy transitioning in order to leave a gentle breeze to the children of the 22nd century. Meeting the global target of carbon neutrality by 2050 will require both the reduction of CO₂ emissions and the recovery of CO₂ through energy transition. One of the Group’s paths to decarbonization is building a CO₂ ecosystem which has not yet been created by market forces in the world. This CO₂ ecosystem comprises three parts: (1) capturing CO₂ from its various sources (CO₂NTAIN), (2) building the carbon capture, utilization and storage (CCUS) value chain by networking from CO₂ emitters to CO₂ utilization and storage, including “CO₂NNEX” as a digital platform (CO₂NNECT), and (3) reusing and recycling CO₂ to something of value (CO₂NVERT). In order to promote CO₂ recovery, MHI Group is expanding and commercializing its lineup of CO₂ carbon capture technologies by 2023. At the same time, the Group will push forward to take a leadership role with many stakeholders in the CO₂ ecosystem.



Three frameworks in order to address CCUS technical and scaling challenges.

Video clip

<https://c-hotline.net/Viewer/Default/2245002acf2f8cde2b393c6d43d1073cf411>



Presentation Material

https://www.mhi.com/finance/library/business/pdf/2021_ccus.pdf



For more information about the Mitsubishi companies, see “mitsubishi.com”

■ <https://www.mitsubishi.com/en/>



The *Mitsubishi Monitor* is published by the Mitsubishi Public Affairs Committee

Marunouchi Nakadori Bldg., 2-3, Marunouchi 2-chome, Chiyoda-ku, Tokyo 100-0005, Japan
Phone: 81-3-5218-8660 Fax: 81-3-5218-8661

