

**Grand Prix Winners 2015-2016**

Started in 1990, the Mitsubishi Asian Children's Enikki Festa is a program that seeks to promote literacy education and to stimulate cultural exchange among children by allowing them to learn about each other through "enikki" (illustrated diaries).

■ [http://enikki.mitsubishi.or.jp/e/index\\_f.html](http://enikki.mitsubishi.or.jp/e/index_f.html)



**Salongxay Simungkhoun**  
Age 10, Boy  
Lao People's Democratic Republic

We clean up the school every Wednesday afternoon under the supervision of our teacher. The teacher assigns some of us to clean the floors, some of us to pick up trash, and some to do other things. My job was to water the plants. We all have fun cleaning up the school. That's why our school always looks good. We have planted green plants and beautiful flowers around the playground. And we have lots of big trees around our school. That's why the school atmosphere is refreshing all year round.



**Kang Xiao-Jie**  
Age 11, Girl  
Chinese Taipei

Sunday, August 9, Rainy and Cloudy  
The scary typhoon went away today. I went out into the garden and saw that the wind had blown over the flowers and trees that my grandfather had worked hard growing since we were little. That made me sad. Lots of the longan fruit that we eat for snacks on our bicycle rides had fallen onto the ground, and that made my brother and sister cry. We decided to fix up the garden, so we picked things up and planted new plants. Now, the garden is better than ever.

\* The Enikki entries above, when necessary, have been translated into English from the language they were originally written in.

**Four Major Summer Festivals in the Tohoku Region**

A variety of summer festivals are held throughout Japan each year, of which the Four Major Tohoku Festivals rank as some of the best known and most colorful.

The festivals kick off with the Aomori Nebuta Festival, the highlight of which is the daily parade of enormous lantern floats, flanked by large taiko drums, musicians and *haneto* dancers who leap, spin and dance their way through the streets of Aomori City chanting "Rassera." The Akita Kanto Festival follows: the crowds are attracted by the *kanto* pole lanterns, 12 meters tall and weighing 50 kilos, which young men wearing white *tabi* socks balance on their shoulders, on their hips and their foreheads. Hanging from the poles over 10,000 *chochin* paper lanterns form a river of light that appears to flow down the streets.

The Yamagata Hanagasa Festival is led by a float decorated to celebrate the Zao-gongen Budhisattva, accompanied by dancing girls dressed in colorful costumes and holding *hanagasa* flower hats adorned with the *benibana* safflower unique to the prefecture. The chant of "Yassho! Makkasho!" is accompanied by the jovial beat of the *hanagasa-daiko* drums as it echoes into the summer night sky. Bringing the curtain down is the Sendai Tanabata Festival, which is a celebration of the beauty of bamboo and Japanese paper. Elaborate handmade streamers and other props adorn the bamboo poles, over 10 meters in length, as participants vie to create the most magnificent effect. The Tanabata Festival attracts over two million tourists a year.

©Jiji Press Photo



The Aomori Nebuta Festival

The Akita Kanto Festival



The Sendai Tanabata Festival

The Yamagata Hanagasa Festival

For more information about the Mitsubishi companies, see "Mitsubishi Profile" ■ <http://www.mitsubishi.com/mpac/e/activity/profile.html>

The Mitsubishi Monitor is published by the Mitsubishi Public Affairs Committee

Marunouchi Nakadori Bldg., 2-3, Marunouchi 2-chome, Chiyoda-ku, Tokyo 100-0005, Japan  
Phone: 81-3-5218-8660 Fax: 81-3-5218-8661

Volume 31 No.4

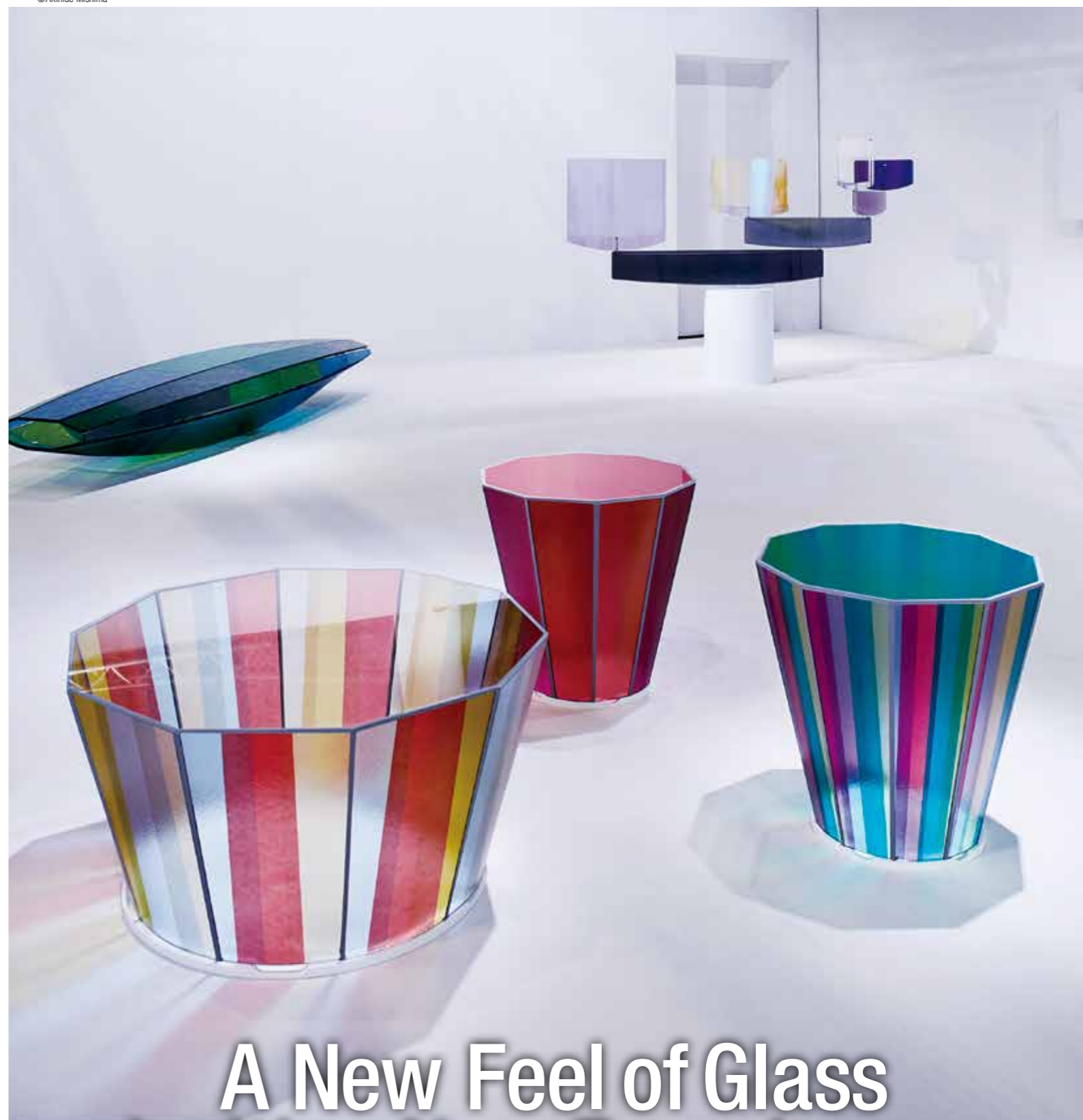
Official Website ■ <http://www.mitsubishi.com/mpac/e/monitor/back/index.html>

We want your feedback! ■ <http://www.mitsubishi.com/mpac/e/talk/form.html>

Printed in Japan on recycled paper

©2017 Mitsubishi Public Affairs Committee

©Akihide Mishima



**A New Feel of Glass  
Inviting New Experiences**



## Cover Story

### An Evolving "Touch" of Glass at Milan Design Week 2017



Drums designed by Jin Kuramoto ©Akihide Mishima

**AGC Asahi Glass (AGC)** made its third appearance in three years at Milan Design Week, one of the world's largest design festivals, held in Italy in April. The theme this year was "Touch." Based on the concept "the feel of glass," AGC exhibited works created with its advanced glass processing technology and the ideas of its creative partners.

Glass has always been a familiar part of our daily lives. In our homes, our cars, on high-rise buildings in our city, we are surrounded by countless types of glass used to create partitions and for protection. And with the advance of smartphones, we spend an increasing amount of time touching glass screens on our devices. Through the development of technologies such as anti-fingerprint coatings and glass strengthening, AGC has been able to adapt this material to meet our evolving needs.

With the focus on the act of "touching" glass, AGC created several glass structures for the exhibition designed to lead visitors to a completely new glass experience. These works explored new aspects of glass production, including nano-unit fine textures and unique methods of expression, in the hope they would inspire a new approach toward glass and open the door to exciting possibilities for this versatile material in our everyday lives. Visitors were encouraged to touch the glass surfaces and enjoy moving, tapping and drawing on them.

AGC was happy to welcome new creative partners: Jin Kuramoto, who produces designs that express the essence of things in an easy-to-understand manner; and the design studio Raw-Edges based in London that is known for its humorous world-view and works which feature many colors and discernable movement. At Milan Design Week, AGC's glass structures showed how glass has advanced as a material and proposed new uses and creative possibilities for it to designers in the fields of architecture, interior design, product design and spatial presentation.

■ <http://www.agc-milan.com/#en>  
■ <http://www.agc.com/english/news/20170322e.pdf>

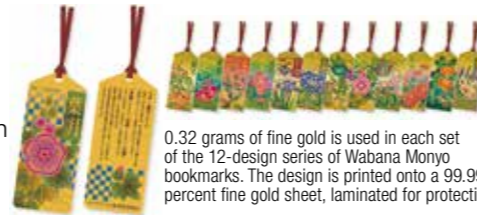
# News & Products

## New Design of Fine Gold Bookmarks



**Mitsubishi Materials Trading** has started to sell a 12-design series of *Wabana Monyo* Fine Gold Bookmarks. Using Japanese flowers from the different seasons and traditional patterns, the series was designed in collaboration with the renowned Japanese stamp designer Motoharu Morita. Each design makes the beholder aware of the Japanese aesthetic sense. The bookmarks suit a wide range of situations and can be used to mark pages in your favorite book, to take as a souvenir when visiting friends abroad or as a gift for important customers, family or friends.

The *Wabana Monyo* Fine Gold Bookmark series can be ordered from our Precious Metals Division, from our Marunouchi branch store in Tokyo or on the internet.



0.32 grams of fine gold is used in each set of the 12-design series of Wabana Monyo bookmarks. The design is printed onto a 99.99 percent fine gold sheet, laminated for protection.

■ <http://www.mmtc.co.jp/ja/news/pdf/2017-03.pdf>

## New "Terminal Ginza" Tourist Service Center Opens in Tokyo



**Lawson** is working to make its stores more convenient for visitors from abroad. Initiatives include the introduction of the Alipay smartphone checkout system at all its stores and the printing in English of product names for *onigiri rice* balls, *temaki-zushi* hand-rolled sushi and the "Lawson Select" range of private brand products, as well as offering duty-free shopping at 115 of its stores (as of the end of March, 2017). The number of foreign visitors to Japan exceeded 24 million in 2016<sup>\*1</sup>, and of those who visited Tokyo some 50 percent visited the Ginza district.

In collaboration with banks and other businesses, Lawson opened the Terminal Ginza Tourist Service Center within the Ginza Six commercial development which started business in the early part of 2017. Terminal Ginza offers tourists a one-stop shopping solution with a convenience store, tourist information, duty-free shopping, parcel delivery service, and foreign currency exchange. In addition to the normal range of convenience store goods, the Lawson Ginza Six store located in the Tourist Center stocks Japanese souvenirs as well as products certified as meeting Halal requirements.



<sup>\*1</sup> Source: Japan National Tourist Organization estimate for December 2016 (issued January 17, 2017).

## A Hospital Management Venture in Myanmar



**Mitsubishi Corporation (MC)** has agreed with Yee Shin Holdings (Yee Shin) and the Capital Diamond Star Group (CDSG) to form a hospital management joint venture in Myanmar, with plans to open a general hospital in Yangon in 2020.

MC's involvement in the field of healthcare to date has primarily been through the distribution and sale of medical devices and supplies, but the company regards hospital management as a growth market over the medium- to long-term. This project marks its first entry into that market, as MC aims to engage in hospital management in Myanmar with its fast-growing economy.

In Myanmar, many people currently travel abroad to receive medical services in Thailand, Singapore and other neighboring countries. The new joint venture will construct a 300-bed general hospital fully equipped to provide high quality medical care in Yangon. Leveraging CDSG's diversified business network in Myanmar, the hospital will be constructed in



Projected exterior of the new hospital

the integrated development complex "Capital City." Yee Shin will provide the hospital management expertise it has built up through its management of two hospitals in Mandalay.

■ <http://www.mitsubishicorp.com/jp/en/pr/archive/2017/html/0000032070.html>

## Participation in The Gems Project on the Outskirts of Kuala Lumpur



**Mitsubishi Jisho Residence**, a subsidiary of Mitsubishi Estate, is participating in The Gems residential development project being undertaken in a suburb near Kuala Lumpur, Malaysia, by Pine Properties Sdn Bhd (PPSB), a subsidiary of IOI Properties Group Berhad, one of Malaysia's leading property players. The project involves the phased development of eight residential buildings ranging in height between 12 and 34 floors on a site of approximately 40,000 square meters with a total of 676 residential units. The property is located in IOI Resort City, adjacent to the Federal Administrative Centre, Putrajaya, an area where the majority of government agencies are located. IOI Resort City is an integrated and sustainable resort development with world-class amenities and services at its doorstep.



■ [http://www.mec.co.jp/e/news/pdf/170329thegems\\_e-1.pdf](http://www.mec.co.jp/e/news/pdf/170329thegems_e-1.pdf)

# Front Line

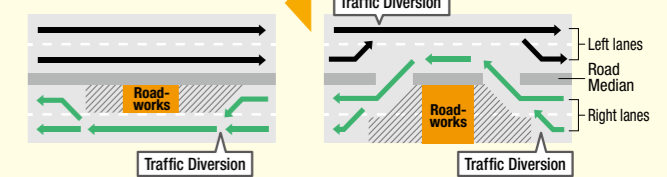
## Innovative Deck Slab Replacement Method Minimizes diversion of traffic



### Half-section deck slab replacement method



### Normal deck slab replacement method



Comparison between half-section deck slab replacement and normal deck slab replacement methods.

**P.S. Mitsubishi Construction**, working with the Nippon Expressway Research Institute, has developed the half-section deck slab replacement method. The new method allows the traffic lanes going in each direction to remain open as the reinforced concrete slabs used on steel bridges are replaced. The technology is expected to lead to greater demand in the future. P.S. Mitsubishi technology is supporting the new technology, which has been developed since 2013. The biggest challenge was lateral movement in the joints between the composite deck slabs. It uses fiberglass and ceramic material, which is resistant to corrosion, and introduces pre-stressing to join the slabs. The use of those materials will give the deck slabs load-bearing performance and a working life of up to 100 years. The method has already been tested in 2016 at the Chugoku Expressway linking Nagoya and Tokyo. P.S. Mitsubishi is now trying to shorten the construction time even further.

■ <http://www.psmic.co.jp/gijyutu/3d.html>

### P.S. Mitsubishi Construction Co., Ltd.

Est.1952  
Harumi Center Bldg., 3F, 5-24, Harumi 2-chome, Chuo-ku, Tokyo 104-8215

P.S. Mitsubishi Construction resulted from the October 2002 merger of P.S. Corporation and Mitsubishi Construction. P.S. Corporation, established in 1952, was a leader in prestressed concrete. Mitsubishi Construction had operated since 1960 as the sole construction firm among the Mitsubishi companies.

■ <http://www.psmic.co.jp/>



Global Spotlight focuses on employees from the Mitsubishi companies who are excelling in their respective fields around the world. In each issue we will get to know different employees, who will tell us about their hometowns, businesses, culture, and pastimes.

from  
**the UK**



## London & Guildford

I work in the London office of Mitsubishi Estate, working as the Office Manager for the last 6 years. Our office moved from the financial district to Soho in September 2015, and we are now located just around the corner from Piccadilly Circus, Regent Street and Carnaby Street. With an endless choice of shops, restaurants, cafés, bars and food markets around our office, there really is no better place in London to both work and play.

And yet, where I choose to make my home is rather different. I live in a town called Guildford, located in Surrey about 30 miles to the southwest of London. My commute to the office is an hour, door to door. I have the Surrey Hills countryside on my doorstep, and yet the town itself has a bustling and historic town centre. I love the pubs along the River Wey, the cobbled High Street, the range of shops, the independent restaurants and cafés, and the beautiful greenery. My family home is just 25 minutes away so I know the area well, but I have only really appreciated this town after I decided to move here from London in 2014. It's a nice contrast to the busy capital, and I would urge anyone visiting London to get out into the countryside for a day or two!



Guildford—River Wey

### Free Time

I am a keen gym goer and like to attend gym classes during my lunch hour on weekdays. On weekends, I prefer to exercise outside, with jogs along the river or playing tennis with my husband. On Saturday mornings, I attend a free yoga class run by Lululemon in Guildford, which in the warmer summer months is held in the beautiful grounds of Guildford Castle.

Spending time with family is very important in my life. I am lucky to have three nephews and a niece nearby, so I love playing with them and going for walks around National Trust properties in the south of England. My brother is rather skilled with a BBQ, so I frequently pop to his house in the summer to enjoy a delicious BBQ on the deck with my family.

My husband and I also love to travel, and some recent highlights include a road trip across the Southern Island of New Zealand, seeing the Northern Lights in Norway, and skiing in Japan. We are currently planning our summer road trip, this time through the Canadian Rockies to Vancouver. My husband and I used to live in Vancouver in 2009-2010, so I cannot wait to see our friends out there and revisit my favourite city in the world.



Guildford—my favourite pub



Country walks with my nephew



Norway trip



New Zealand road trip



**Ms. Sasha Armour**  
Office Manager

**Mitsubishi Estate  
London Limited**

from  
**Indonesia**



**Ms. Yenni Vermita**  
Senior Manager

**PT. DNT INDONESIA**  
A subsidiary of Dai Nippon Toriy

## Uniquely Ramadan in Indonesia

As the country with the biggest Muslim population in the world, Indonesia has a unique tradition during Ramadan called *ngabuburit*. Actually this is not an Islamic tradition but just the routine activities that most Muslim people in Indonesia undertake to pass time before breaking their fast. A couple hours before breaking their fast, they go to a park or to a market, to a tourist resort gathering with their friends, their family to get some food or just to kill time. There are some rare foods and drinks that are only found during Ramadan, like *kolak*, *sarabii*, *cendol*, *pacar cina*, *kolang kaling*, and *blewah*. Every region has its own specific and unique foods and drinks. For example, I am from West Sumatra where we have some specific dishes like *lamang tapai*, *karupuk kuah*, *onde-ond*.

Another unique tradition during Ramadan is “*beduk sahur*.” This is a way of waking people up in the very early morning so they can have their “*sahur*,” which is an Islamic term referring to the meal consumed early in the morning by Muslims before fasting. Teenage boys march around the neighborhood with a “*beduk*” or other musical instrument yelling “*sahur sahur*.”

And we still have a unique tradition before the Eid festival, which most people go back to their original village or home town to celebrate. They will stay there during that holiday, meet up with their family, their old friends, and their relatives as well. Almost all regions in Indonesia celebrate Eid with *ketupat*, a rice dish wrapped in a coconut leaf and cooked about 2-3 hours, eaten together with some vegetables and *opor ayam*.



Ngabuburit at Summarecon Bekasi



Kerupuk Kuah

### PT. DNT Indonesia

I have been working at PT. DNT Indonesia since August 2000, when it was still PT. Tanabe Chemical Indonesia. I am in charge of the Accounting and Administration Department, handling finance matters, and making sure that the company complies with government or authority rules so that all the company's business activities work as planned. PT. DNT Indonesia has two plants, the first one focuses on the bonded business zone, the other one on domestic business only. Both plants are located in Cikarang, a largely industrial district to the east of Jakarta.

I really feel comfortable working at this company since the atmosphere is very warm, friendly, and nice. By working here I can meet many Japanese people, and many others from abroad as well, and I have been learning many things related to my work. The company often has family gatherings to strengthen relationships and togetherness between us all. It's really very nice.



PT. DNT Indonesia Family Gathering



Free time with family



Spending time with family

### How I spend my free time

Most of my free time is spent with my beloved family. Of course, like others, I feel my family is everything to me. All I want to do is to make them happy. And I always keep an eye on my children, watching them grow. They are my spirit, my energy, and my soul. Every time I feel tired I just look at their pictures and all the tiredness disappears when I meet them. My husband, my children and I often spend some time going out to watch movies, having dinner, going to a tourist resort, or just staying at home, cuddling, and watching our favorite football team. Sometimes my daughter and I will try some new recipes, watch some funny videos, or I just sit with her while she is drawing. I always sit with my son while he finishes his homework, guiding him in studying for a test or preparing for school outdoor activities.



# Green Diamonds

Green Diamonds highlights the ongoing efforts of Mitsubishi companies to foster a **greener**, more sustainable planet and **brighter**, more vibrant communities through wide-ranging environmental and social initiatives.

## Awards for Energy Efficiency and New Energy



**Mitsubishi Heavy Industries Thermal Systems**, a subsidiary of **Mitsubishi Heavy Industries, Ltd.** (MHI), was awarded the 2016 Grand Prize for Excellence in Energy Efficiency and Conservation (Director-General's Prize) by the Agency for Natural Resources and Energy for its GART (constant speed) and GART I (variable speed) series of centrifugal chillers.

The GART / GART-I series offers cooling capacities ranging from 500 to 5,400 refrigeration tons. MHI Thermal Systems's award-winning products were highly acclaimed for their performance, compactness, and compatibility with larger capacity systems which have earned praise from a wide range of users.

**Mitsubishi Electric**, meanwhile, was awarded the 2016 New Energy Award by the New Energy Foundation for its station energy-saving inverter (S-EIV).

These inverters reduce grid power requirements by supplying surplus regenerative energy generated from train brakes to station facilities.

With a drip-proof, dustproof and anticorrosion housing protecting it from harsh outdoor conditions, the cube-design S-EIV was highly acclaimed for its compact size and low weight which enable it to be installed at stations with limited space, as well as making a significant energy saving contribution in Japan's railway network.



GART series CG circuit side

The station energy-saving inverter (S-EIV), Compact and high performance.

- <http://www.mhi.co.jp/news/story/1702015830.html>
- <http://www.mitsubishielectric.co.jp/society/traffic/product/denryoku/d02.html#s-eiv>

## First SBT Initiative Approval for a Japanese Food Products Company



The mid-term greenhouse gas (GHG) reduction target set by **Kirin Holdings** for Kirin Group companies in Japan and overseas has been approved by the Science Based Target (SBT) international initiative. Kirin Holdings is the first Japanese food products company to achieve this. The company has set water resources, bioresources, containers and packaging and global warming as its four main targets in its Long-term

Environmental Vision for the Kirin Group. The target approved by the SBT initiative relates to the prevention of global warming, and the Kirin Group's participation in the initiative is expected to see an acceleration in the number of companies adopting such an approach both in Japan and overseas.

After the approval of its target, Kirin Holdings started using hydroelectric power, which produces no carbon, at two Kirin Group plants in April this year and is also looking to utilize its Green Power Certificates in switching to renewable energy sources to power its operations.



Kirin Beverage Shonan Plant



Kirin Brewery Toride Plant



## First Woman Captain in NYK's 132-Year History



On April 1 this year, a deck officer named Tomoko Konishi became the first woman in **NYK's** 132-year history to be promoted to the rank of captain. In 2004, NYK became the first oceangoing Japanese company to accept women deck officers when it employed Ms Konishi, who had graduated from the National Institute of Technology, Toba College in Mie prefecture, that year. After joining NYK, Ms Konishi has worked aboard containerships, pure car and truck carriers, and LNG carriers, among others, as a pioneering female officer. She has been active in a number of fields and



Captain Tomoko Konishi

has also used her onboard experiences in office work.

Since 2004, the number of women officers has continued to rise, and the company



currently has 19 working all over the world at sea and on land. NYK will continue with its efforts to encourage diversity in the workforce by improving the workplace environment and promoting human resources.

- <http://www.marineinsight.com/shipping-news/nyk-promotes-woman-captain-first-time/>

## MOU Signed with the Philippine Government



**Mitsubishi Motors Corporation** (MMC) signed a Memorandum of Understanding with the Philippine Department of Environment and Natural Resources in February regarding a joint study into environmental load reduction using the electrification technology employed in the company's Outlander PHEV plug-in hybrid EV

and i-MiEV EV models. CEO Osamu Masuko stated that he very much wanted to contribute to environmental load reduction utilizing the electrification technology the company had developed and evolved in its Outlander PHEV and i-MiEV models. The company is looking to invite other Philippine governmental institutions and research institutions, including universities, and electric companies, to participate in the project.

